

**Protect your flock and your investment
with our convenient and effective
farm dog worming programme**



Independent vets, dedicated care

Bideford • Ilfracombe • Pilton • Roundswell • South Molton
Holsworthy • Bude • Bradworthy

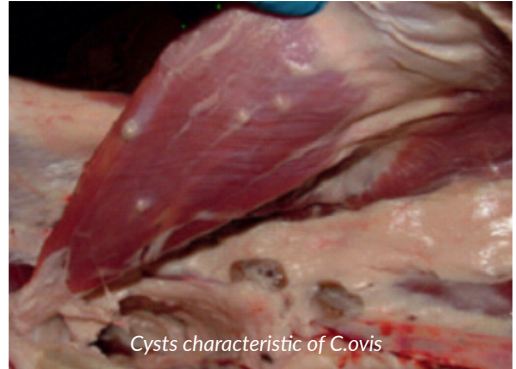
e: info@torchfarmvets.com
torchfarmvets.com



When did you last worm your farm dogs?

Key Facts:

- ✓ Eggs can survive on grass for up to six months, leaving your sheep extremely vulnerable to their consumption via contaminated pasture.
- ✓ Once ingested, sheep develop larval cysts in their body, frequently causing their carcass to be condemned at slaughter as unfit for human consumption.
- ✓ Tapeworm causing *Cysticercus tenuicollis* was responsible for over 751, 500 liver condemnations and also 28,000 carcasses were rejected because of *C.Ovis*.



Further Information

High levels of cysticercosis have been reported across South West England (Green et al, 1995) with one outbreak leading to condemnation of 7% of carcasses (Eichenberger et al, 2011).

82% of producers reported deworming working dogs every three months.

Findings suggest that there is a need for greater veterinary engagement in ovine cysticercosis control, including stronger advice on frequency of farm dog cestocide protocols.

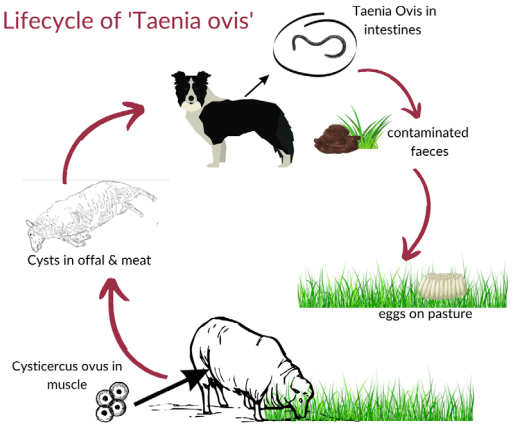
Infestation with some species of tapeworms is as high as 50% in young sheep (Bates 2013)

In 2017 Dog tapeworms cost the English sheep industry more than £2.1 million in abattoir condemnations (AHDB 2017)

The full report of Taeniid and other parasite ova in the faeces of working sheepdogs in south-west England can be found on our website

www.torchfarmvets.com

Lifecycle of 'Taenia ovis'



Dogs need to be dosed every month to ensure no Tapeworm reaches maturity. Why? C.Ovis (sheep measles) tapeworm matures in 35 days. Worming dogs every 3 months (90 days) leaves a 55 day window where dogs are exposed and could be passing thousands of eggs onto your pasture.

Dogs need to be dosed every month to ensure no Tapeworm reaches maturity! Why? ...

Let's do the maths ... If you were JUST to use an dual wormer, this means:

55 days x 4 times a year (quarterly dual wormer)
= 220 unprotected days per dog per year!

- ✓ Also remember that infected dogs may pass **thousands** of eggs onto your pasture!
- ✓ A combination of a Tape & Roundworm wormer and straight Praziquantel tablets provides maximum protection.
- ✓ FABBL & Red Tractor requires farm dogs to be wormed regularly to minimise disease risks to livestock.



Once Tapeworm eggs have been eaten by a dog it develops in the dog's small intestine, maturing approximately 35 days from ingestion to become a mature tapeworm which can produce eggs that can be deposited on sheep pasture in the passed dog faeces.

The adult tapeworm can produce up to 250,000 eggs per day and if infected with two or three adult worms, one infected dog can contaminate a pasture with up to 750,000 eggs per day.

We recommend farm dogs are treated monthly for tapeworm (quarterly for roundworm) to help prevent problems with carcass condemnation due to C.Ovis & Cysticercus Tenuicollis (bladder worm)

There is a need to control both tapeworms and roundworms so different treatments are required which is why our worming programme is great as we will send you exactly what you need when you need it!

Independent vets, dedicated care

www.torchfarmvets.com

Torch Farm Vets have developed a cost effective, simple worming programme designed exclusively for your farm dogs.

- ✓ Tablets sent quarterly with a monthly text reminder when to treat
- ✓ Affordable programme, tailor made for farm dogs
- ✓ An easy way to keep records up to date and comply with Farm Assurance standards
- ✓ Includes a laminated poster to inform other dog owners of the risks to your sheep of tapeworm.

Take action now to break the cycle of infestation through simple farm and land management practices:

- ✓ Keep all dogs from scavenging on carcasses, body parts or afterbirth
- ✓ Keep all dogs on farm wormed against tapeworm (including Granny's Yorkie!)
- ✓ Encourage control in visiting dogs as they can bring the infection onto your grassland, especially if their owners don't pickup the dog's faeces

Sign up for the farm dog worming programme today by speaking to one of our team on: 01271 879 516. For pricing please call your local practice.

Flea & tick treatments also available through our practices.



Independent vets, dedicated care

e: info@torchfarmvets.com
torchfarmvets.com

